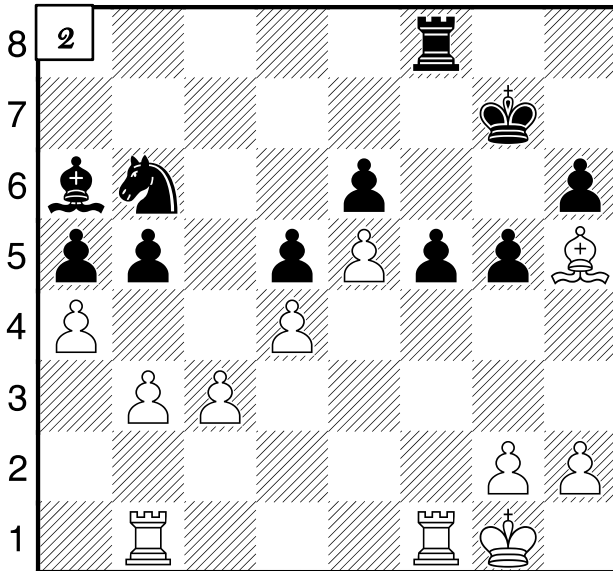


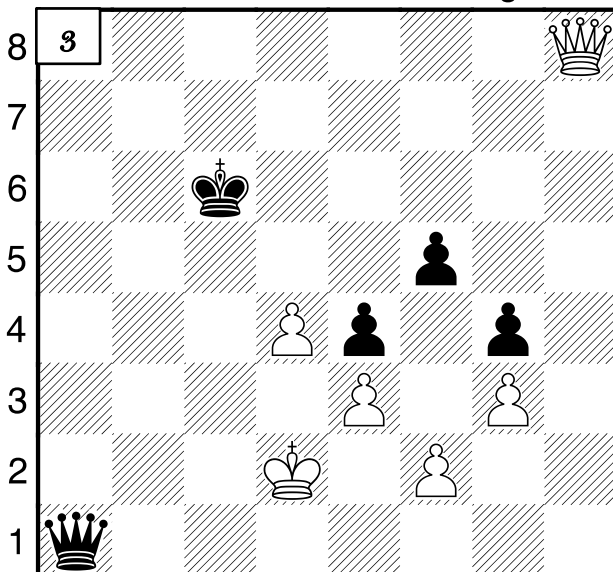
1

a b c d e f g h



2

a b c d e f g h



3

a b c d e f g h

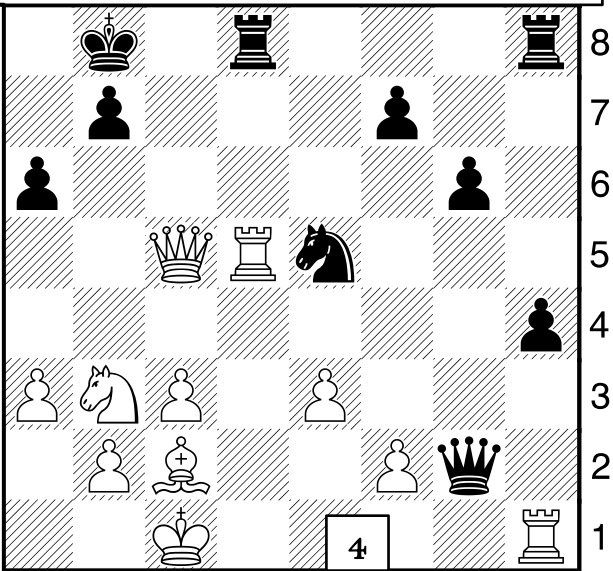
ANSWERS
BELOW !!

I explain the answers with what's called "notation".
Notation conventions: K is king, Q is queen, N is knight, B is bishop & R is rook. Squares are lower case letters first then numbers. Check is +, "x" is capture & checkmate is #.

Castling on the King side is "O-O" and on the Queen side is "O-O-O".

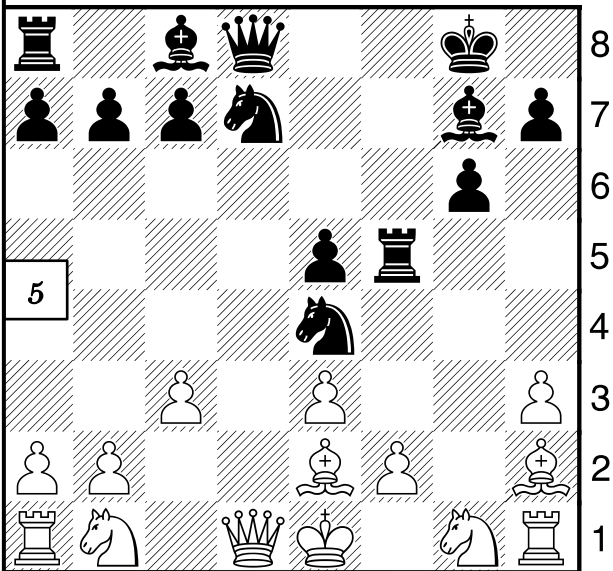
Notate your games! Is my K safe? Why did my opponent make that move? Are my pieces safe? Do I have any checks, captures, threats of check and/or threats of capture? What order is best?

1: Qh5+! Bg6, QxBg6+, Kf8, Qf7#!
2: Be2, Bb7, a4xb5!
3: Double attack! d5+!, Kxd5, QxQa1!
4: RxRd8+! RxRd8, QxNe5+!
5: Double attack, look for checks! Qd5+, Kh8, QxNe4!
6: RxBc6! If black plays RxRc6, NxRc6, KxNc6 and white easily queens a pawn! So after RxBc6 black's best move is to save his R!



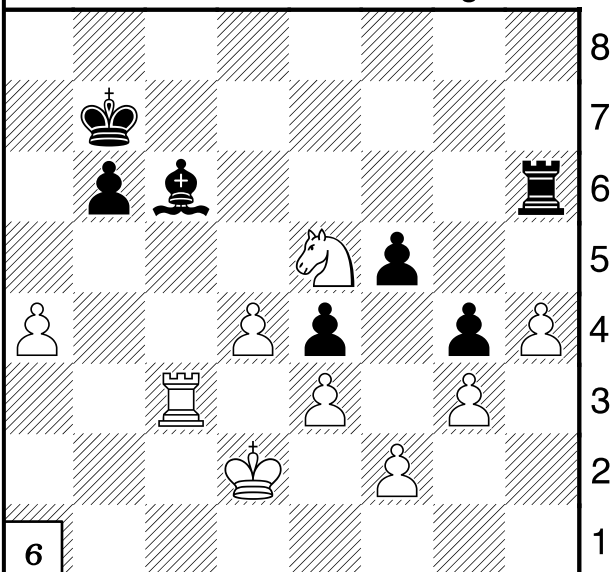
4

a b c d e f g h



5

a b c d e f g h

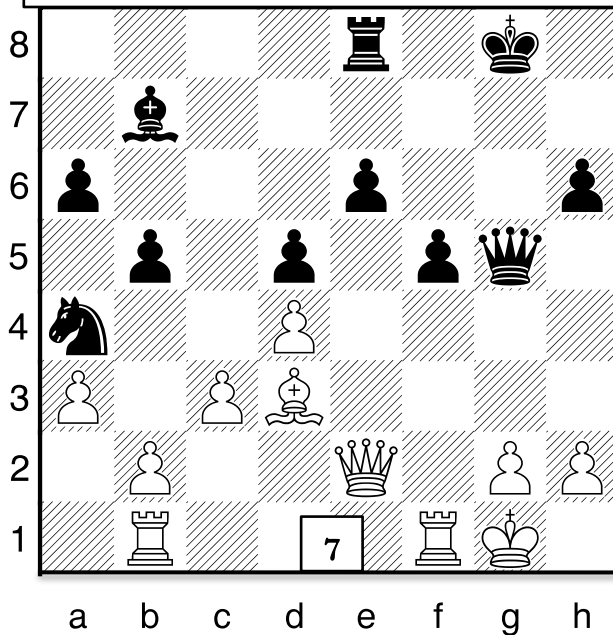


6

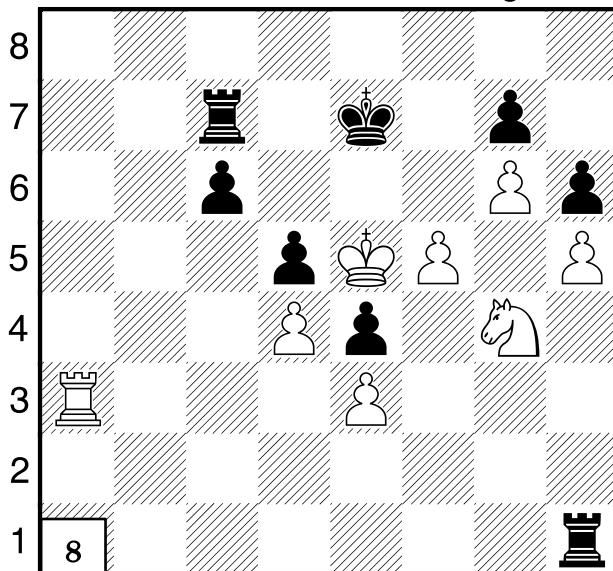
a b c d e f g h

NAME: _____

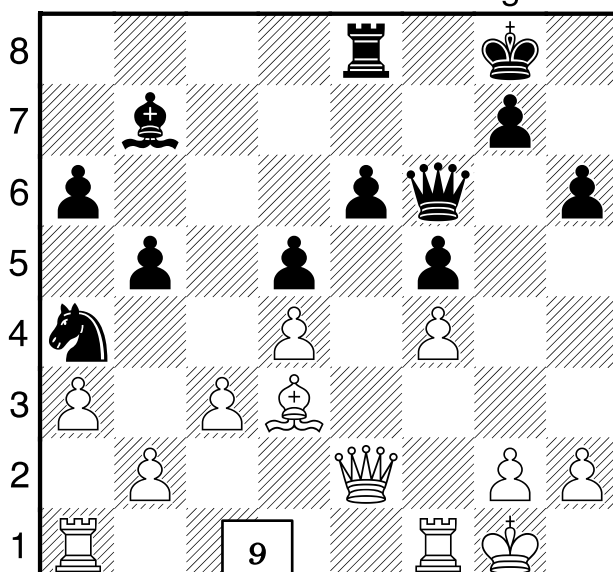
Increase your creativity: complete my puzzles! January 2, 2020



a b c d e f g h



a b c d e f g h



9

Maine Team Championship March 7: Bangor

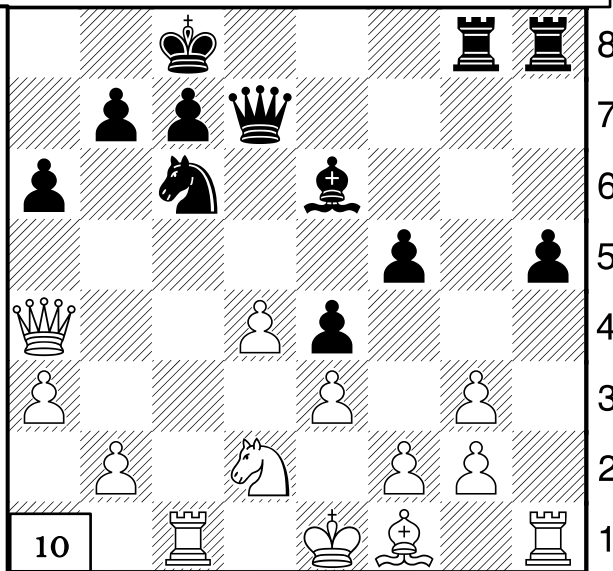
When you have multiple moves that are checks and/or captures order & position matter!

These diagrams are pictures of the puzzles we do in class. I'd love it if you'd go over them with your child!

7: White's crushing move is Rxf5! If e6xRf5 then QxRe8+! Then Kg7, Re1, Bc8, Re7+ forces black to play QxRe7: if instead he tries to escape with Kf6 white mates with Qf7#! 8: White wants the g7 pawn! Ra8, Rg1, Rg8, RxNg4, Rxg7+ opening up white's pawns to queen! 9: Bxb5! If black plays a6xBb5 then Qxb5, Rb8, QxNa4! 10: Bxa6! If b7xBa6 then Qxa6+, Kd8, RxNc6! 11: Bg6 is trapped so f5, Qg5, f5xBg6, Qxe3+, Kh1.

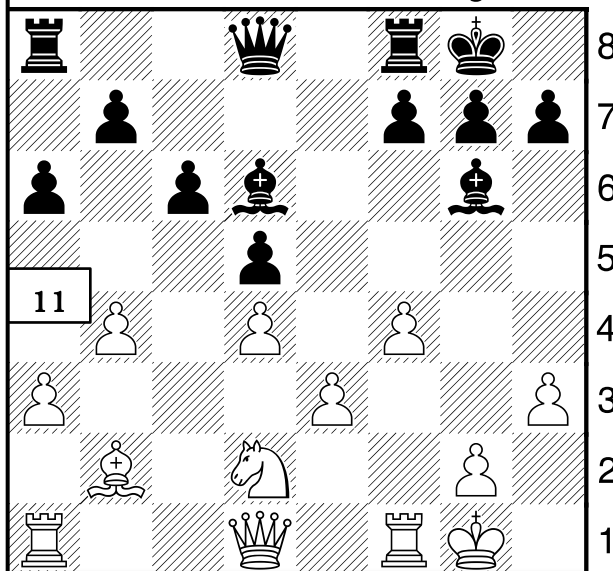
12: The rook at b8 pins our pawn b2 so we have to make it move so we can take his Q! Rc8+! Best is Kd7, RxRh8, Nd3 threatens QxBc1# so white plays Qc2, QxQc2+, KxQc2, RxRh8, KxNd3!

More puzzles
Hope School's athletic page:
chess, downloads
http://hes.sportsoffic.com/downloads.php?level_id=1&org_id=26&sport_id=395



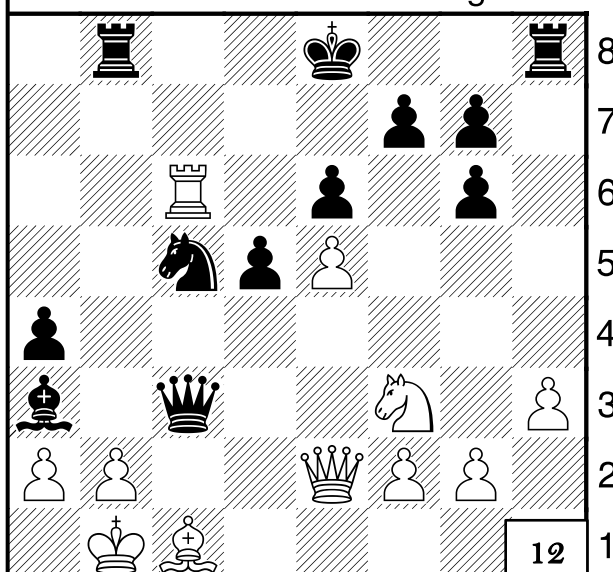
10

a b c d e f g h



11

a b c d e f g h



12

Get on my weekly email: BruceHaffner@gmail.com!

Hard Work Always Pays Off!