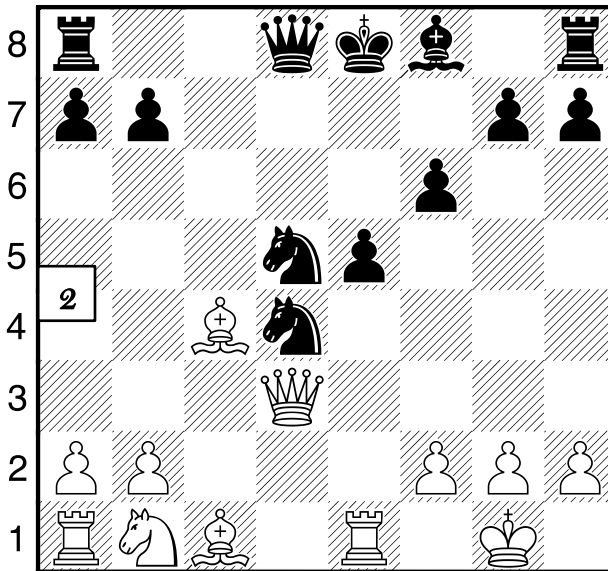
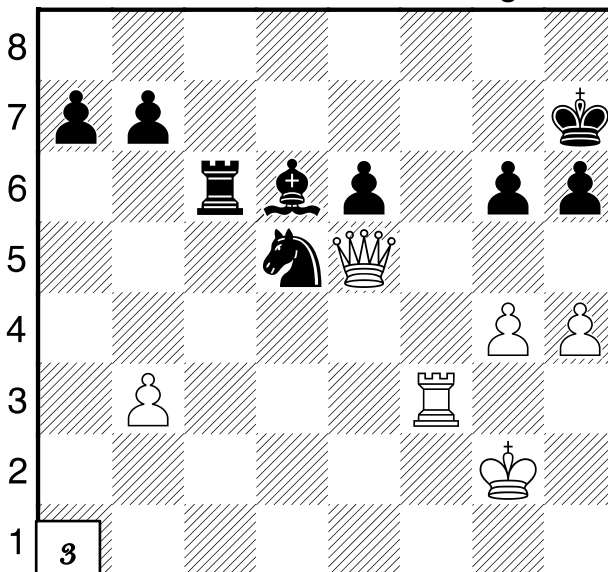


a b c d e f g h



a b c d e f g h



a b c d e f g h

ANSWERS

1 & 2 are one move, 3-12 are three moves!

I explain the answers with what's called "notation".

Notation conventions:
 K is king,
 Q is queen,
 N is knight,
 B is bishop &
 R is rook.

Squares are lower case letters first then numbers. Check is +, "x" is capture & checkmate is #. Castling on the King side is "O-O" and on the Queen side is "O-O-O". Notate your games!

1: is Rc8#.

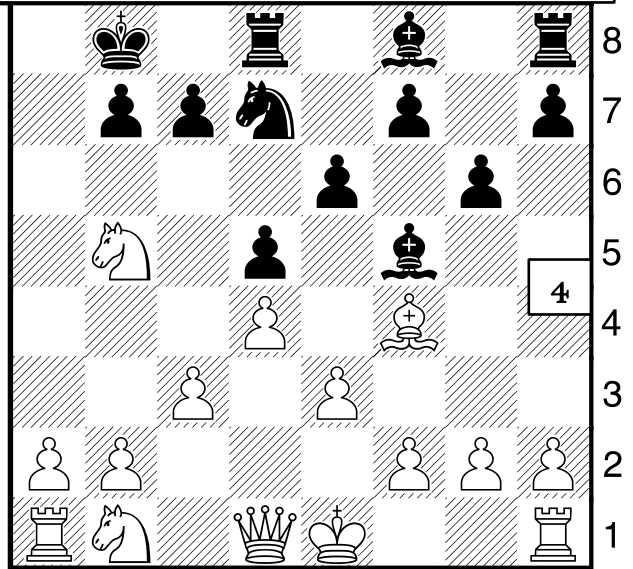
2: QxNd4 (pawn can't take back or RxK!).

3: Rf7+, Kg8 then Qg7#!

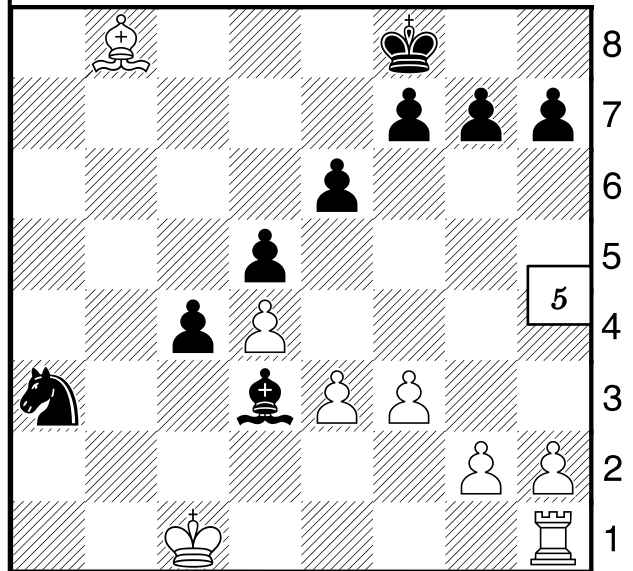
4: Double attack: Bxc7, Kc8, BxRd8.

5: Double attack: Bd6+, Ke8, BxNa3.

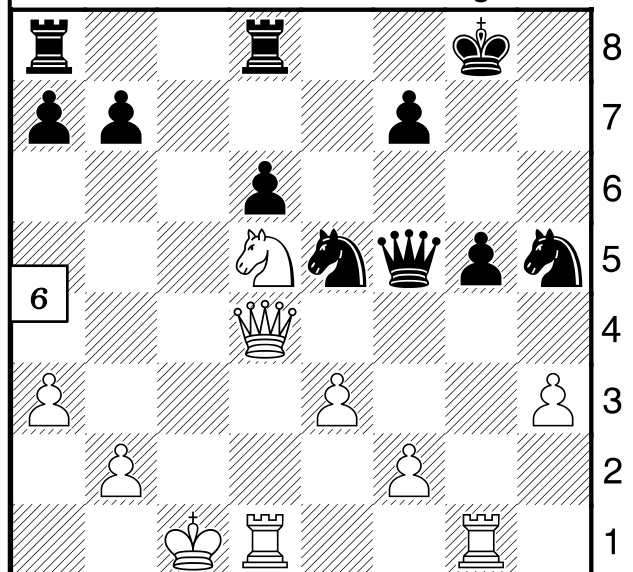
6: Royal fork (double attack with a knight): Ne7+, Kh7, NxQf5!



a b c d e f g h



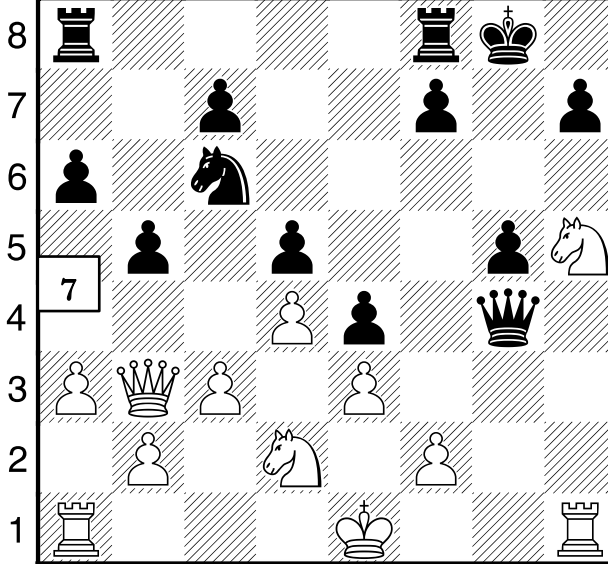
a b c d e f g h



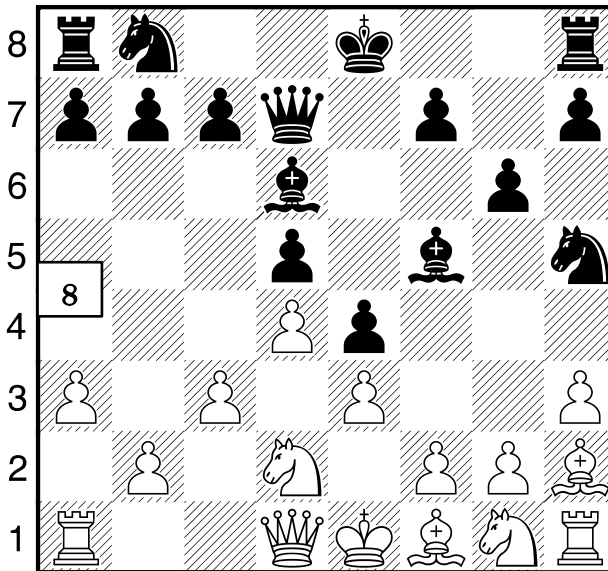
a b c d e f g h

NAME: _____

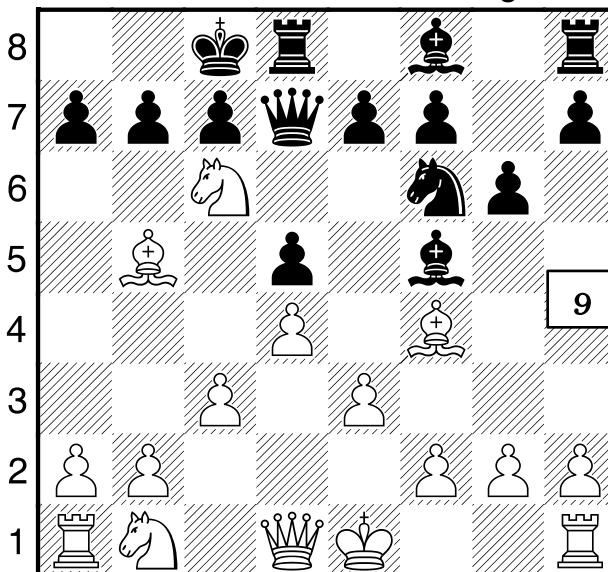
Increase your creativity: complete my puzzles! Oct 12, 2019



a b c d e f g h



a b c d e f g h



a b c d e f g h

**Maine Team
Championship
March 7:
Bangor**

These diagrams are pictures of the puzzles we do in class. I'd love it if you'd go over them with your child!

**7: Double attack (royal fork)
Nf6+, Kh8 NxQ!**

**8: Double attack g4 (this means pawn to g4),
Bxg4, h3xBg4.**

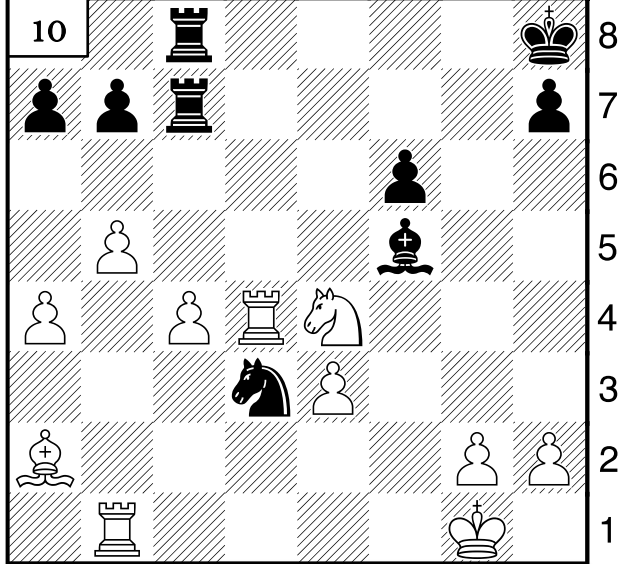
**9: Na7+, Kb7,
BxQd7!**

**10: Double attack:
Nd6, Bg6, NxRc8.**

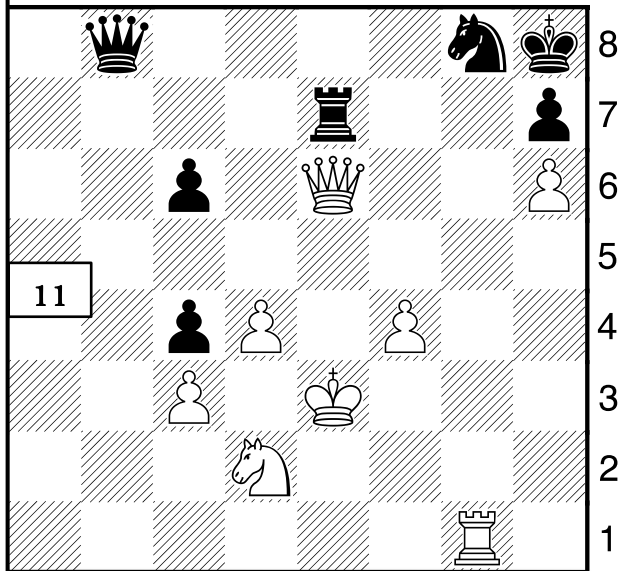
**11: White's Queen is pinned to his King (if the queen moves away the rook attacks whites King!). What to do? Remove the defender!
RxNg8+! QxRg8, QxRe7!!**

12: RxNg3!! If queen takes back white plays Nh5 Royal Fork!!

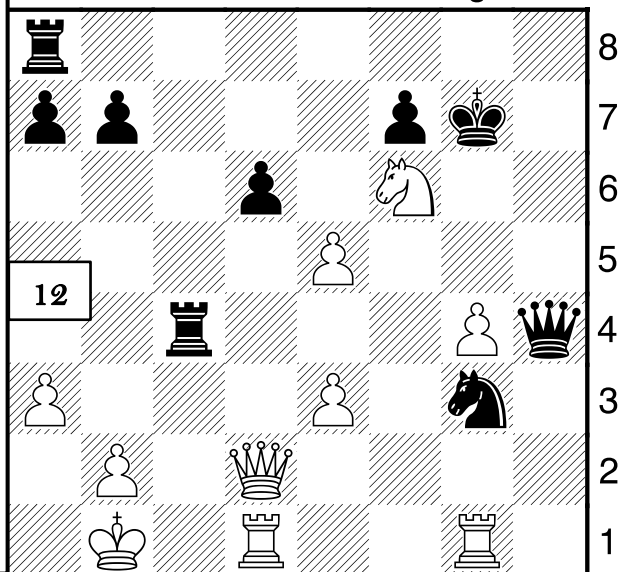
Questions? Get on my weekly email list: email BruceHaffner@gmail.com, call 847-987-3091.



a b c d e f g h



a b c d e f g h



a b c d e f g h