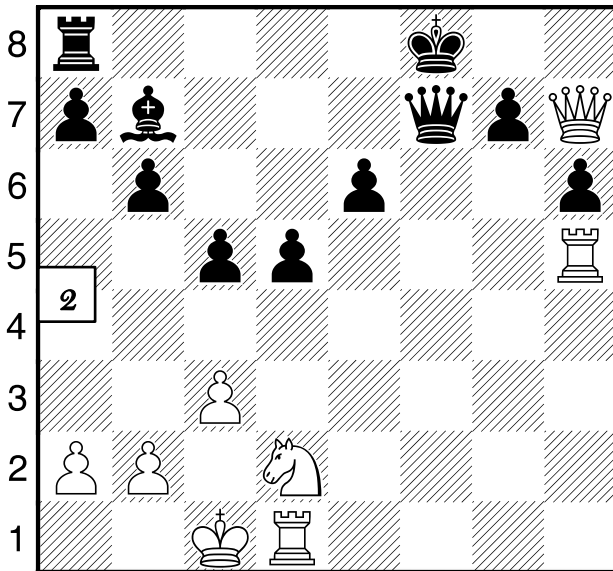
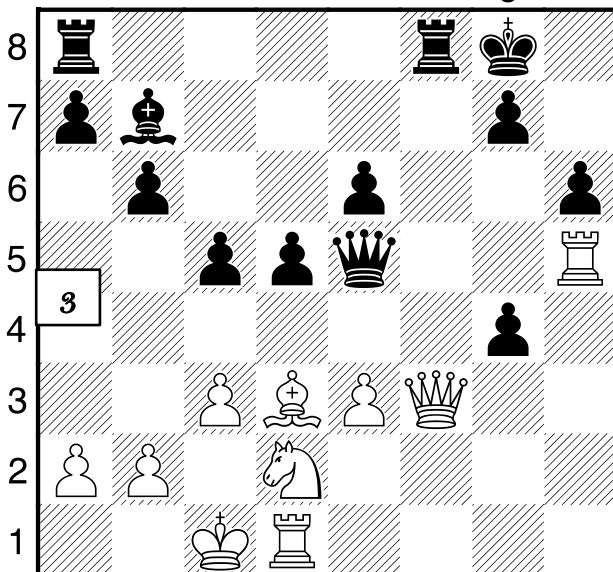


a b c d e f g h



a b c d e f g h



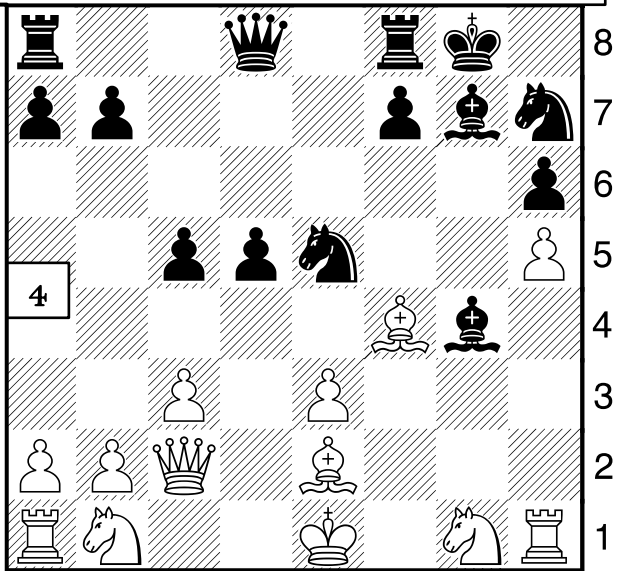
a b c d e f g h

ANSWERS
BELOW !!

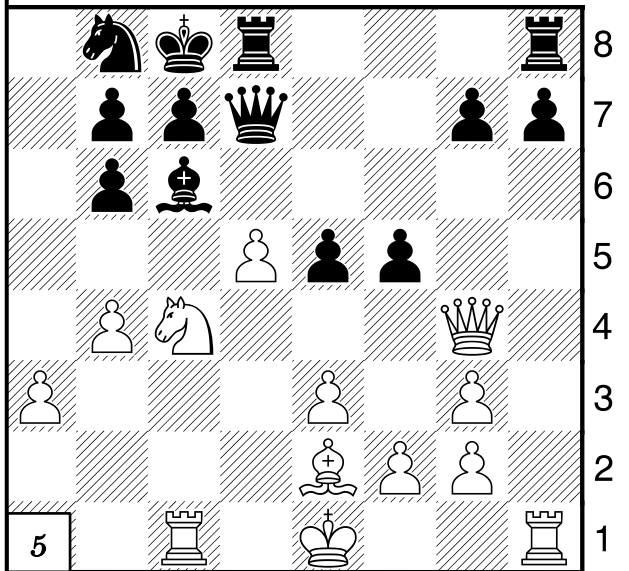
I explain the answers with what's called "notation".
Notation conventions:
K is king,
Q is queen,
N is knight,
B is bishop &
R is rook.
Squares are lower case letters

first then numbers. Check is +, "x" is capture & checkmate is #. Castling on the King side is "O-O" and on the Queen side is "O-O-O".
Notate your games! Is my K safe? Why did my opponent make that move? Are my pieces safe? Do I have any checks, captures, threats of check and/or threats of capture? What order is best?

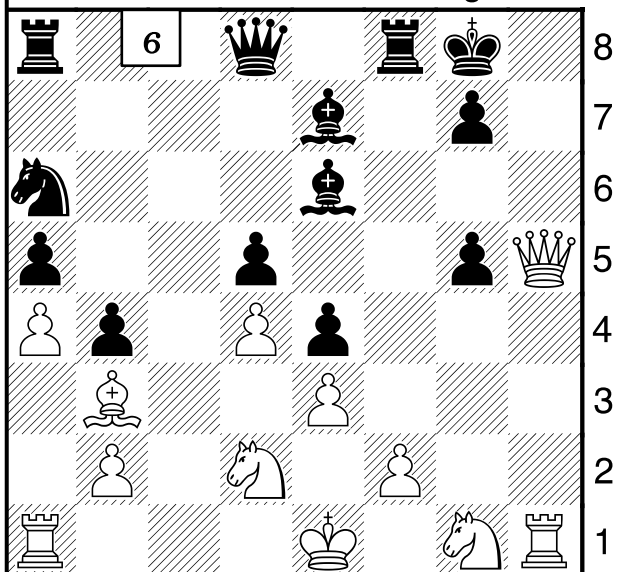
- 1: Qxg7, Kd6, QxBb7!
- 2: Rf1, QxRf1, NxQf1!
- 3: QxRf8+, RxQf8, RxQe5!
- 4: BxNe5, BxBe5, BxBg4!
- 5: d5xBc6, Nxc6, Qh5!
- 6: Nx e4! If black plays d5xNe4 checkmate: BxBe6+, Rf7, QxRf7#!



a b c d e f g h



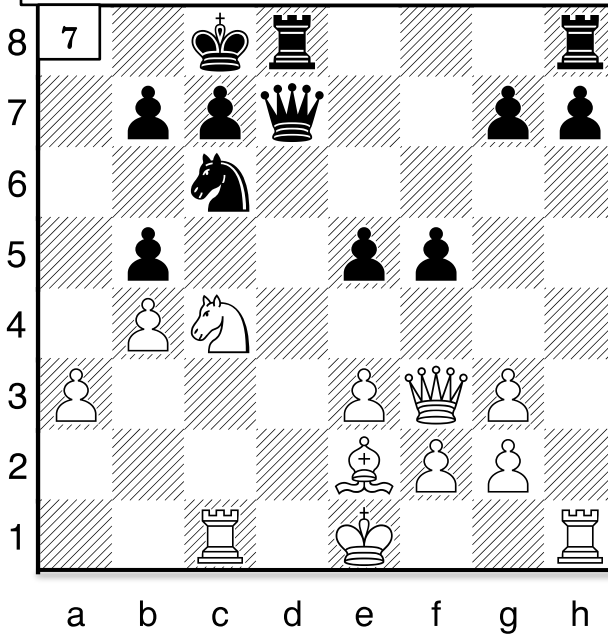
a b c d e f g h



a b c d e f g h

NAME: _____

Increase your creativity: complete my puzzles! Dec 2-3, 2019

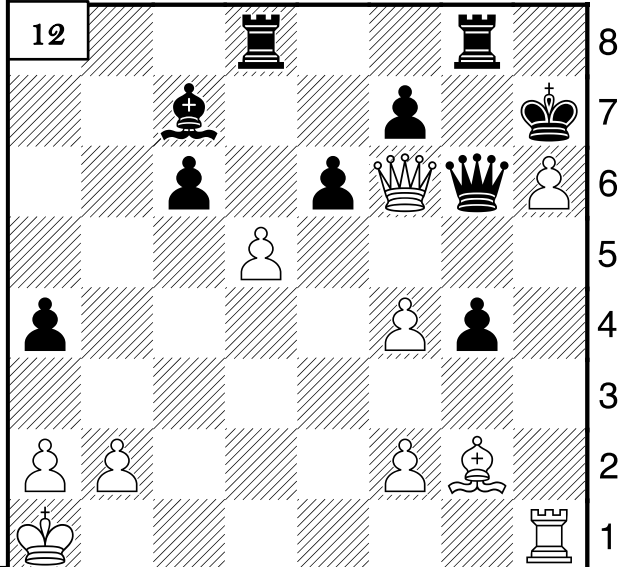
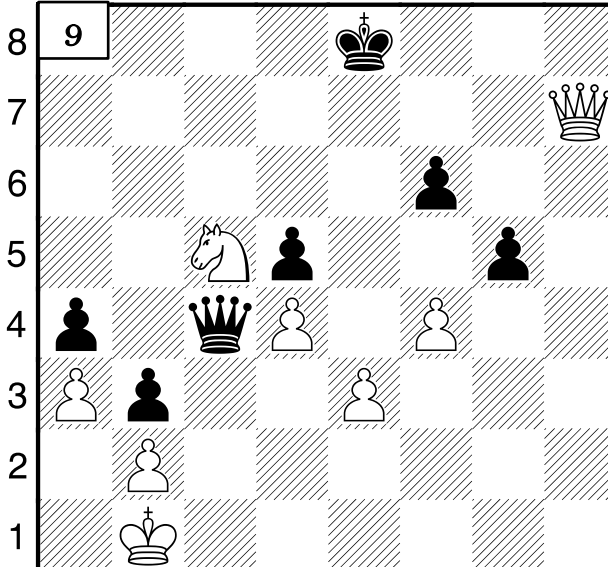
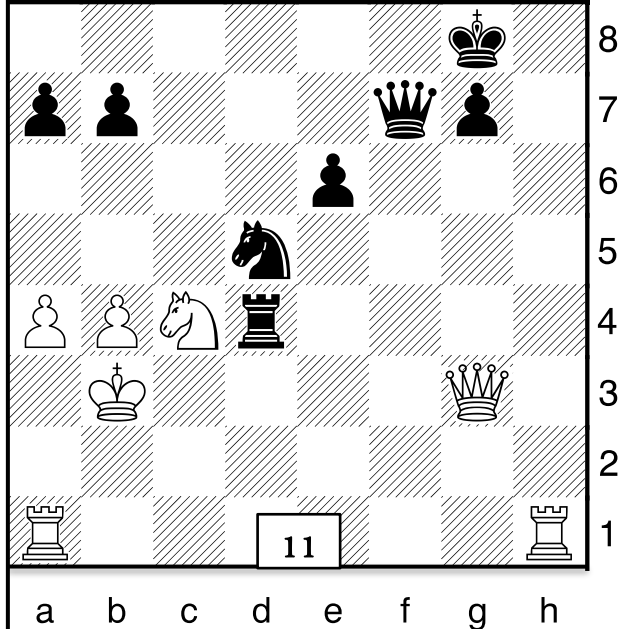
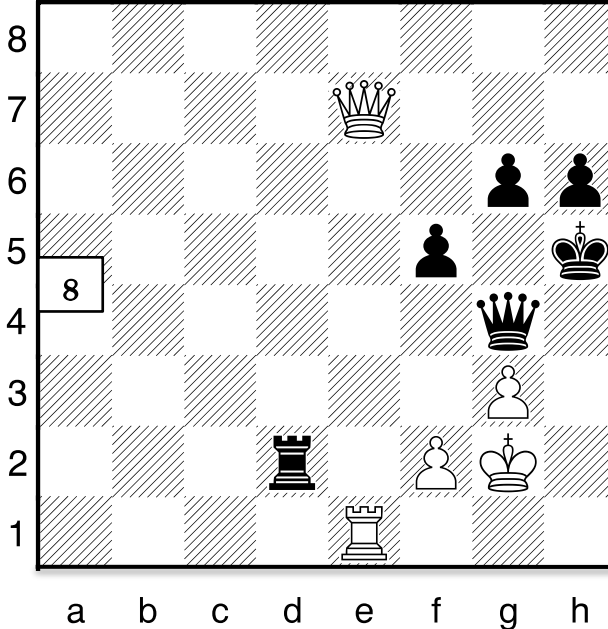
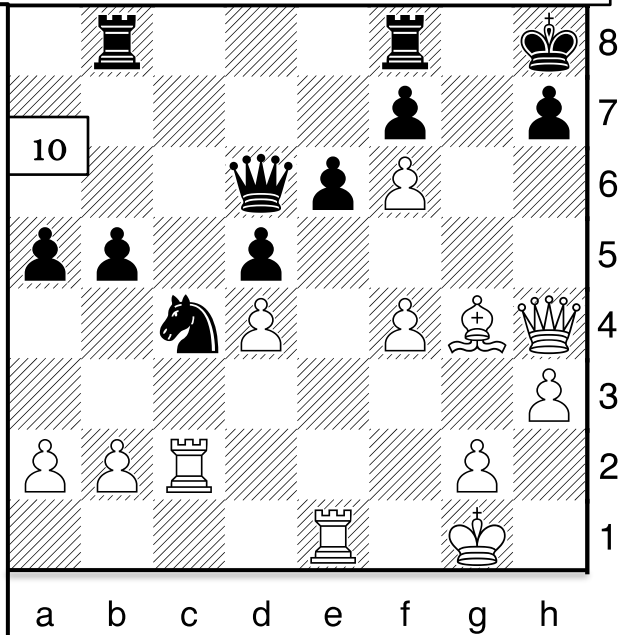


**Maine Team
Championship
March 7:
Bangor**

When you have multiple moves that are checks and/or captures order & position matter!

These diagrams are pictures of the puzzles we do in class. I'd love it if you'd go over them with your child!

7: Black played b5 attacking our N: what to do? If you save your Nb2 you lose your R with Qd2+, Kf1, QxRc1! So first play Rd1 black must save his Q then save your N! Think before you move! 8: Rh1+, Qh3, RxQh3+, Kg4, Q or Rh4#!
9: Qd7+, Kf8, Ne6+, Kg8, Qg7#!
10 Be2, Rg8, Bd3, Rg6, BxRg6!
11: Qb8+, Qf8, Rh8+, KxRh8, QxQf8+!
12: Be4, QxBc4, Qxf7+, Kh8, Qf6+, Kh7, Qf7+ getting a draw after position looks the same 3 times (repetitive check)!



More puzzles
Hope School's athletic page:
chess, downloads
http://hes.sportsoffice.com/downloads.php?level_id=1&org_id=26&sport_id=395

Get on my weekly email: BruceHaffner@gmail.com!

Hard Work Always Pays Off!