

ANSWERS
BELOW !!

I explain the answers with what's called "notation".

Notation conventions:
K is king,
Q is queen,
N is knight,
B is bishop &
R is rook.

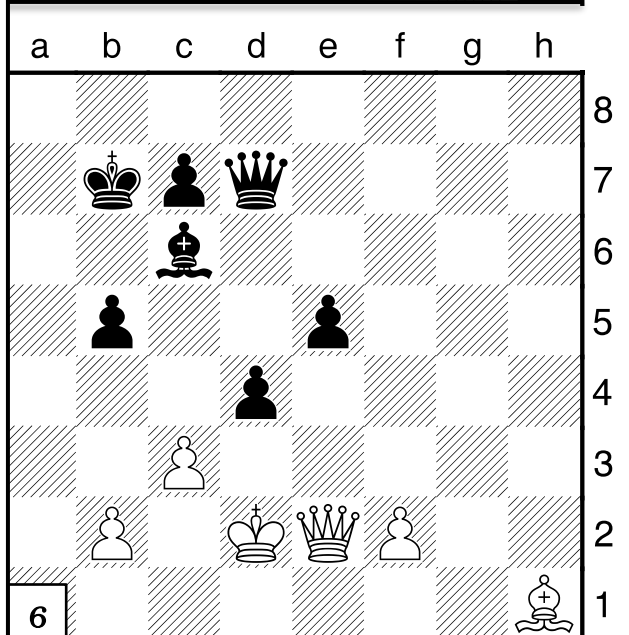
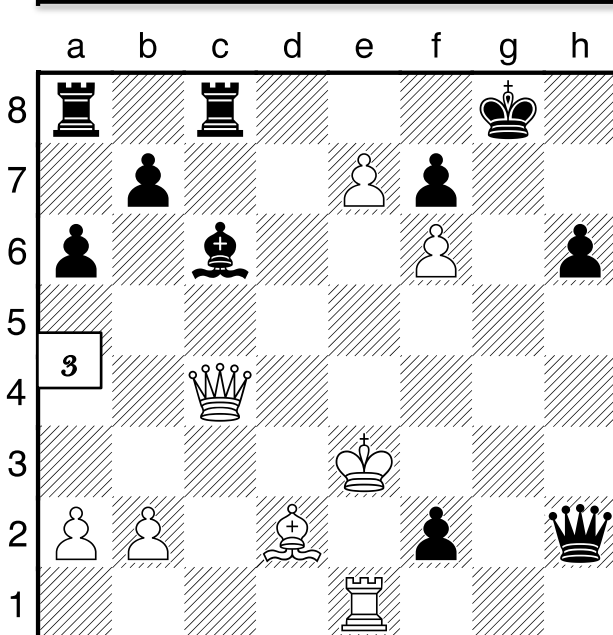
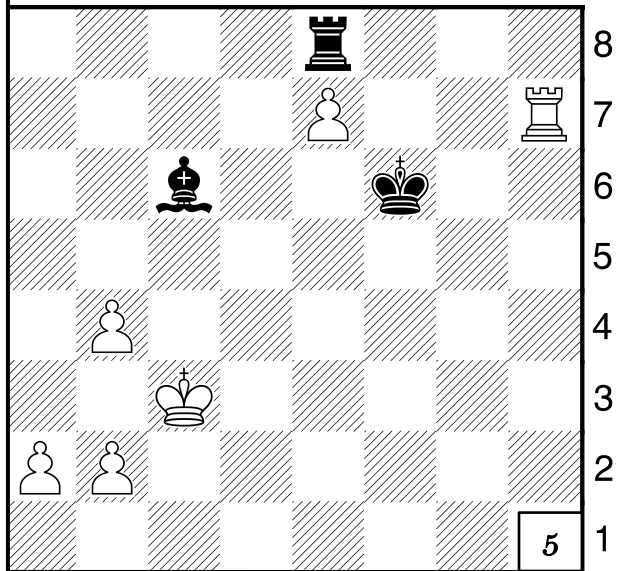
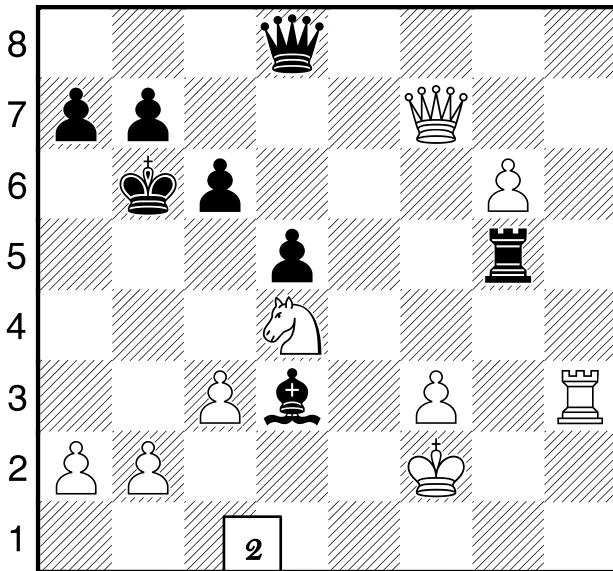
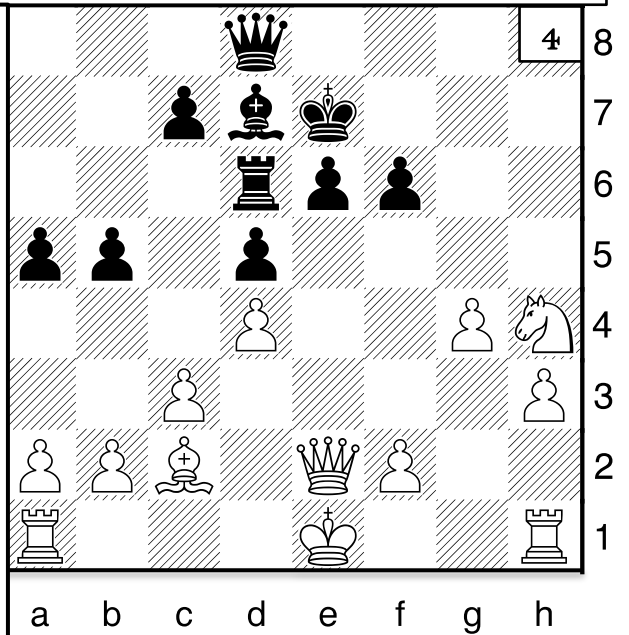
Squares are lower case letters first then numbers.

Check is +, "x" is capture & checkmate is #. Castling on the King side is "O-O" and on the Queen side is "O-O-O".

Notate your games! Is my K safe? Why did my opponent make that move? Are my pieces safe? Do I have any checks, captures, threats of check and/or threats of capture?

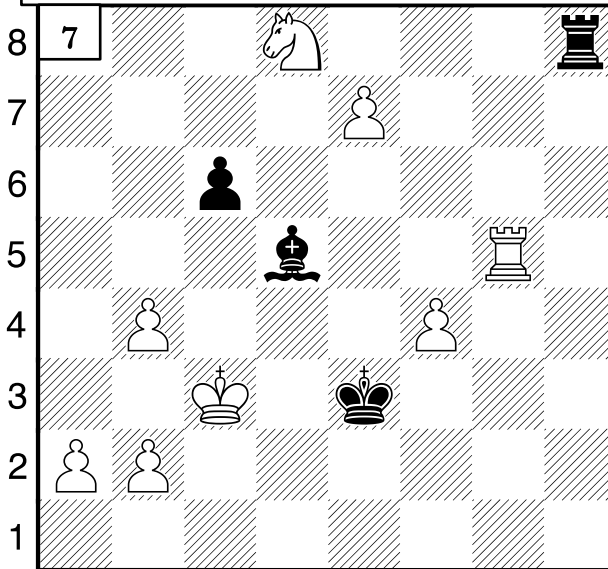
What order is best?

- 1: Pawn e5 wins B or N! 2: Ne6, Qd6, NxRg5!
- 3: Qg4+, Kh8, Qg7#!
- 4: Nf5+, Kf8, NxRd6!
- 5: K & B on the same row so a R move: Rh6+, Kxe7, RxBc6!
- 6: Look for check! Qxb5? Yes Bc6 is pinned! Kc8, BxBc6!

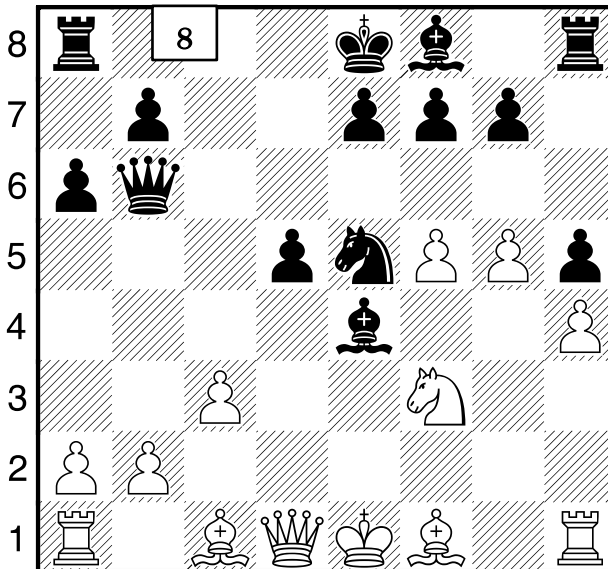


NAME: _____

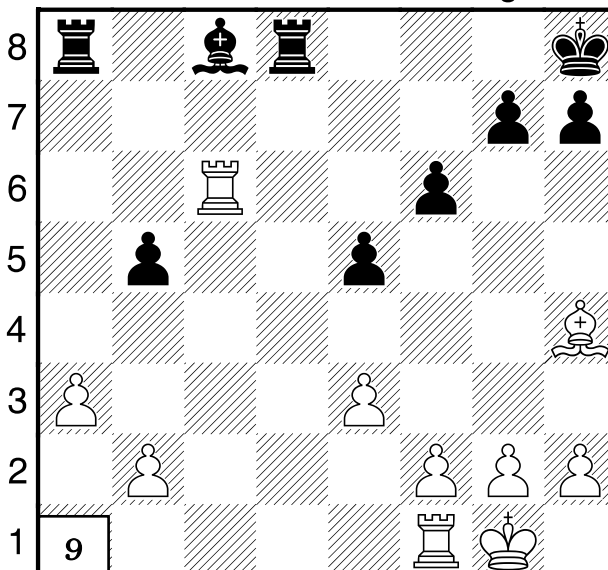
Increase your creativity: complete my puzzles! Nov 23, 2019



a b c d e f g h



a b c d e f g h



9

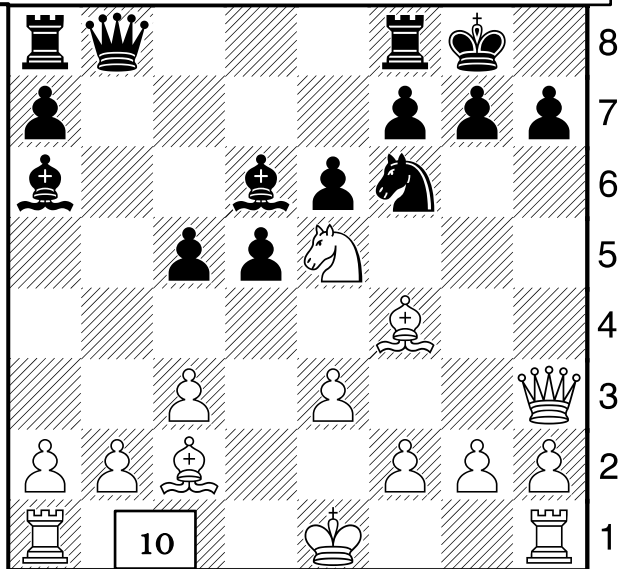
**Maine Team
Championship
March 7:
Bangor**

When you have multiple moves that are checks and/or captures order & position matter!

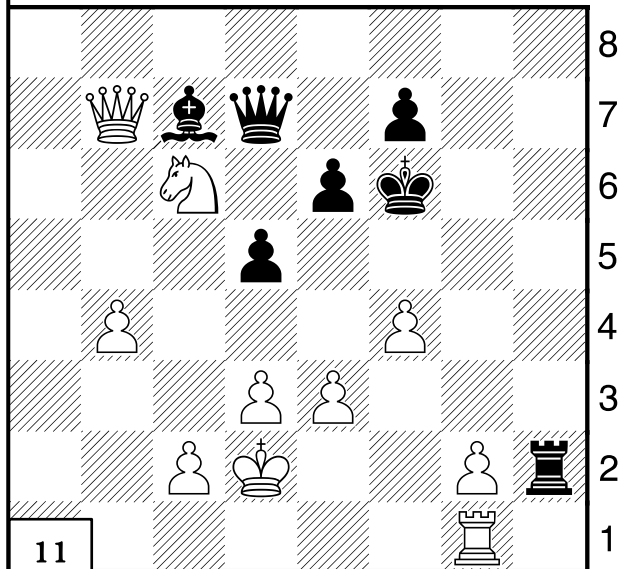
These diagrams are pictures of the puzzles we do in class. I'd love it if you'd go over them with your child!

7: Re5+, Kxf4, e7 to e8=Q! RxQe8, RxRe8! 8: NxNe6 if black is hasty BxRh1 he is crushed Qh4+ now if Kd8 Qd7#! If Q blocks QB5 then BxQb5! If Qc6 then NxQc6! Answer: NxNe5, O-O-O, Nxf7, BxRh1, NxRh8! 9: Rxf6! If g7xRf6 then Bxf6+ wins Rd8! 10: Remove Nf6 for Qh7#! See Nd7? Black must play Rd8, NxQb8!

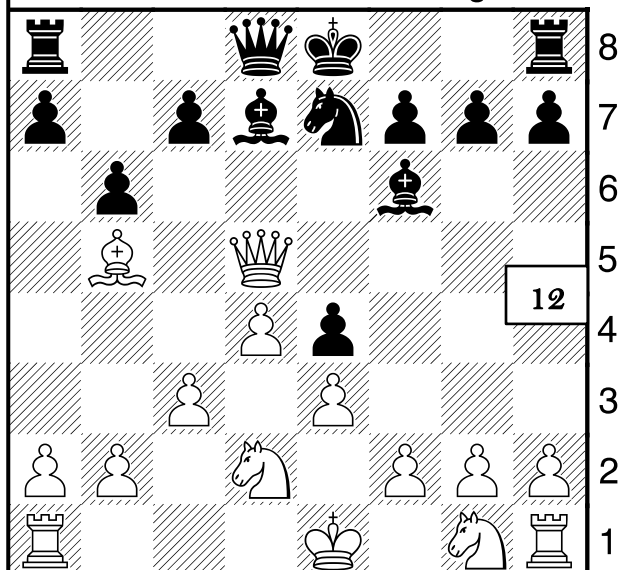
11: Ne5, Qd6, Ng4+, Kg7, NxRh2! 12: BxBd7+! If QxBd7 then QxRa8! Answer: BxBd7, Kf8, Qxe4 and now if QxBd7 white has QxRa8! More puzzles Hope School athletic page, chess, downloads: http://hes.sportsoffice.com/downloads.php?level_id=1&org_id=26&sport_id=395



a b c d e f g h



a b c d e f g h



12