

ANSWERS
BELOW !!

I explain the answers with what's called "notation".

Notation conventions: K is king, Q is queen, N is knight, B is bishop & R is rook. Squares are lower case letters first then numbers.

Check is +, "x" is capture & checkmate is #.

Castling on the King side is "O-O" and on the Queen side is "O-O-O".

Notate your games! Is my K safe? Why did my opponent make that move? Are my pieces safe?

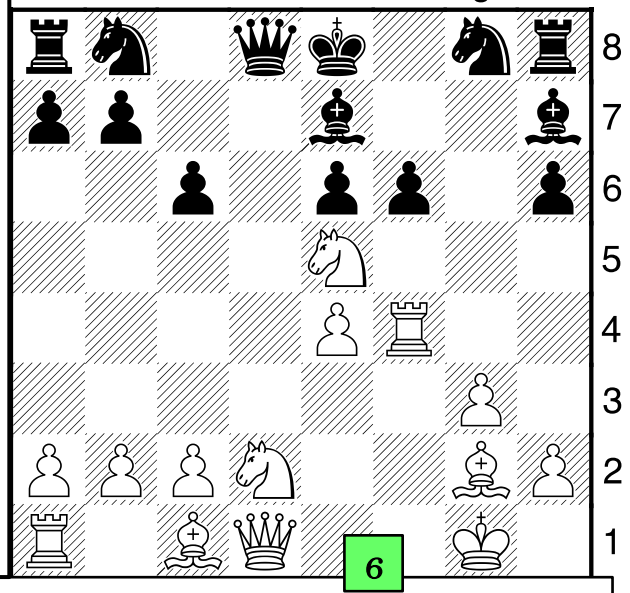
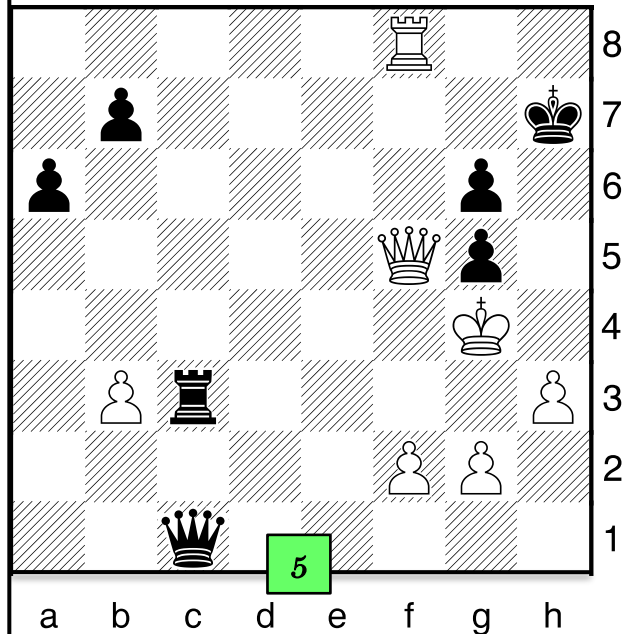
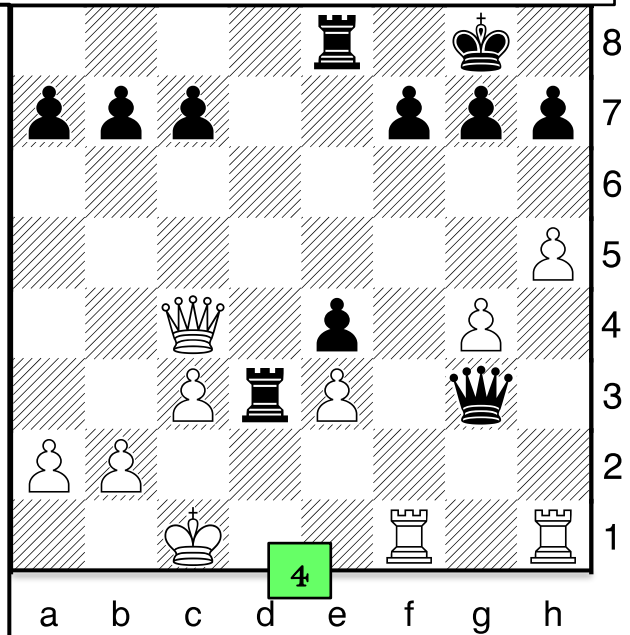
Do I have any checks, captures, threats of check and/or threats of capture? What order is best?

These are all checkmates!

Always look for check. If it is a multi move mate very often every move white makes is a check to force black's K towards a square where it is totally trapped!

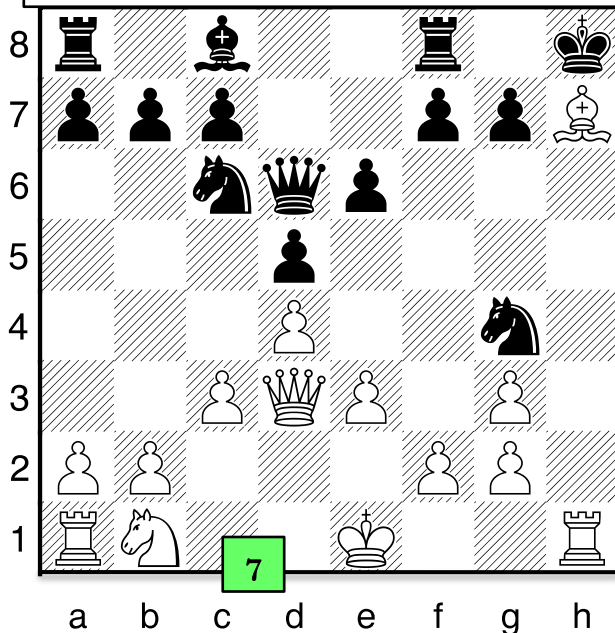
Touch move tournaments, like the State Championship, are touch move and require that you win with checkmate, not a K capture!

- 1: Qd7#! 2: Qh7#!
3: QxRh8+. Kf7, Rh7#! 4: Qxf7+, Kh8, QxRe8#!
5: Qf7+, Kh6, Rh8#! 6: Qh5+, Bg6, QxBg6+, Kf8, Qf7#!



NAME: _____

Increase your creativity: complete my puzzles! January 11, 2020



**Maine Team
Championship
March 7: New
Location:
Orono Check
www.chessmaine.net for
more details
soon!**

When you have multiple moves that are checks and/or captures order & position matter!

These diagrams are pictures of the puzzles we do in class. I'd love it if you'd go over them with your child!

7: Bg8+(discovered with Rh1), KxBg8, Qh7#!

8: Re7+, Kd8, Rf8#!

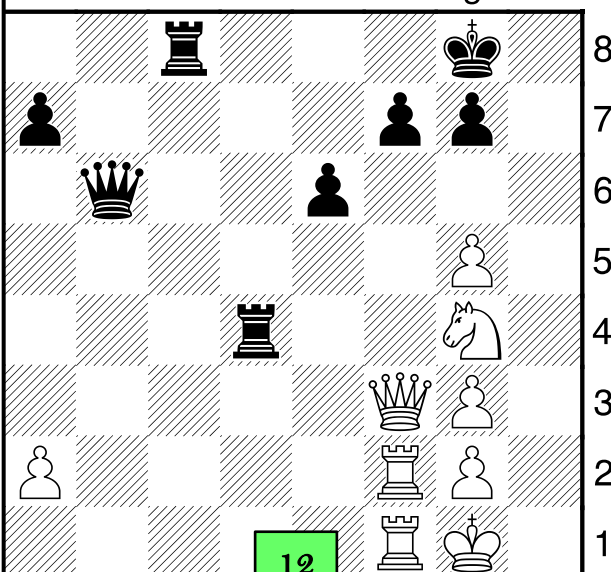
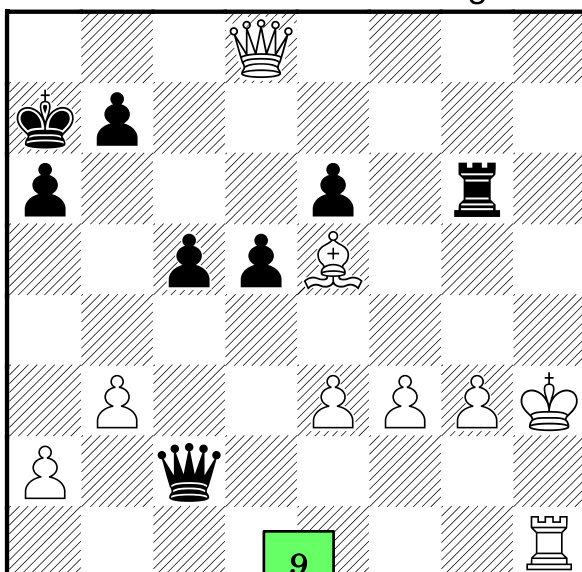
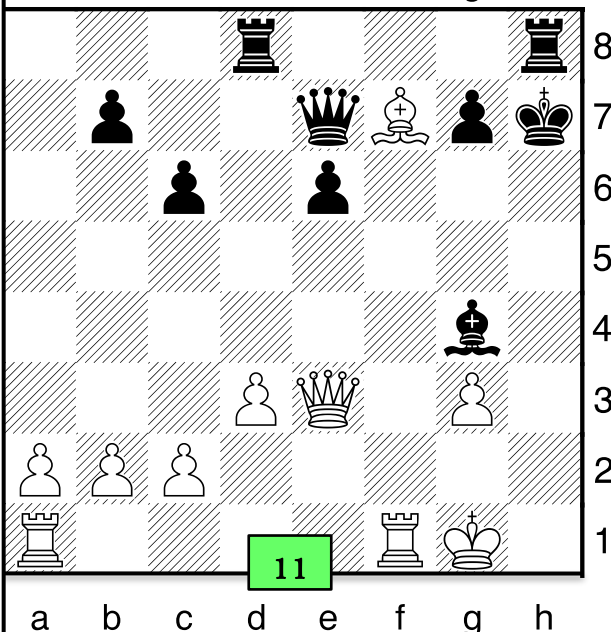
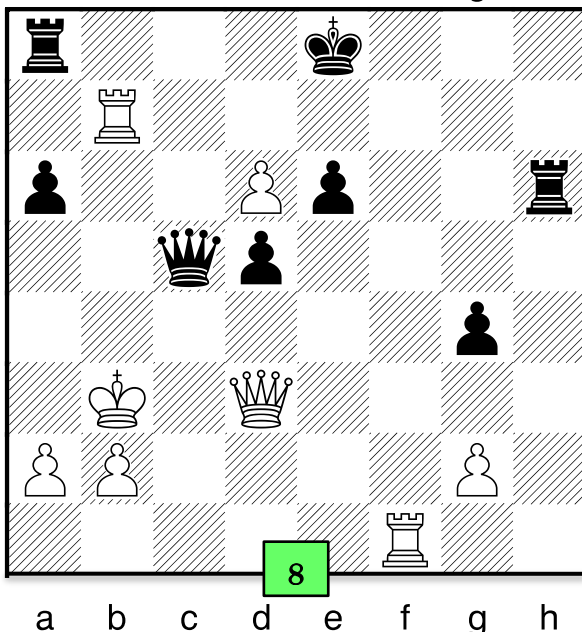
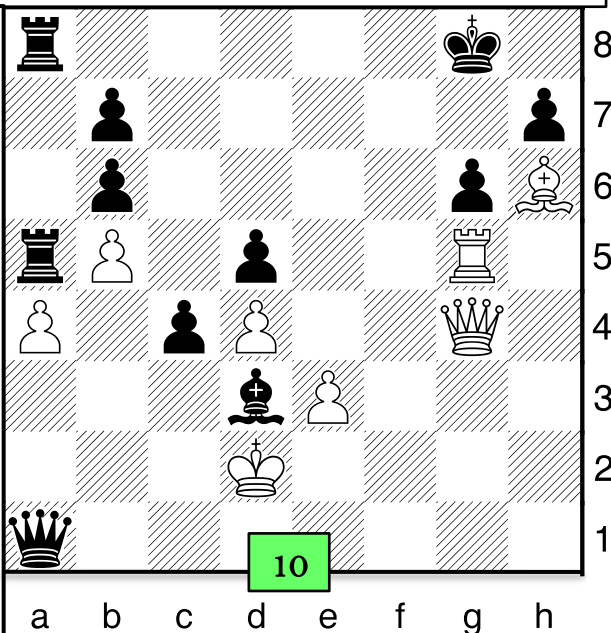
9: Bb8+, Ka8, Bc7+(discovered, with the Q), Ka7, Qb8#!!

10: Qe6+, Kh8, Qf6+, Kg8, Qg7#!

11: Qe4+, Bf5, Qh1+, Bh3, QxBh3+, Qh4, Qxh4#!

12: Qxf7+, Kh8, Qh5+, Kg8, Nh6+, g7xNh6, Qg6+, Kh8, Rf8+, RxRf8, RxRf8#!!

More puzzles: Hope School's athletic page: chess, downloads http://hes.sportsoffice.com/downloads.php?level_id=1&org_id=26&sport_id=3



Get on my weekly email: BruceHaffner@gmail.com!

Hard Work Always Pays Off!